

JEJU/Jeju Intl(RKPC)
RWY 07
RNAV KAMIT 2E
RNAV AKPON 1E, RNAV TAMNA 2E
RNAV PANSI 2E, RNAV LIMDI 1E

ELEV, ALT IN FEET
DIST IN NM
BRG ARE MAG
VAR 8° W

True North

MOA 23
FL 500
5 000 AMSL

MOA 40
FL 500
5 000 AMSL

MOA 24
FL 500
10 000 AMSL

MOA 25H
FL 400
10 000 AMSL

MOA 25H
FL 170

MOA 25H
FL 400

MSA 25 NM
JEJU ARP

AKPON
1571

TAMNA
1571

TAMNA 2E
1571

PC813
1571

PC816
1571

PC817
1571

PC818
1571

PC819
1571

PC820
1571

PC821
1571

PC822
1571

PC823
1571

PC824
1571

PC825
1571

PC826
1571

PC827
1571

PC828
1571

PC829
1571

PC830
1571

PC831
1571

PC832
1571

PC833
1571

PC834
1571

PC835
1571

PC836
1571

PC837
1571

PC838
1571

PC839
1571

PC840
1571

PC841
1571

PC842
1571

PC843
1571

PC844
1571

PC845
1571

PC846
1571

PC847
1571

PC848
1571

PC849
1571

PC850
1571

PC851
1571

PC852
1571

PC853
1571

PC854
1571

PC855
1571

PC856
1571

PC857
1571

PC858
1571

PC859
1571

PC860
1571

PC861
1571

PC862
1571

PC863
1571

PC864
1571

PC865
1571

PC866
1571

PC867
1571

PC868
1571

PC869
1571

PC870
1571

PC871
1571

PC872
1571

PC873
1571

PC874
1571

PC875
1571

PC876
1571

PC877
1571

PC878
1571

PC879
1571

PC880
1571

PC881
1571

PC882
1571

PC883
1571

PC884
1571

PC885
1571

PC886
1571

PC887
1571

PC888
1571

PC889
1571

PC890
1571

PC891
1571

PC892
1571

PC893
1571

PC894
1571

PC895
1571

PC896
1571

PC897
1571

PC898
1571

PC899
1571

PC900
1571

PC901
1571

PC902
1571

PC903
1571

PC904
1571

PC905
1571

PC906
1571

PC907
1571

PC908
1571

PC909
1571

PC910
1571

PC911
1571

PC912
1571

PC913
1571

PC914
1571

PC915
1571

PC916
1571

PC917
1571

PC918
1571

PC919
1571

PC920
1571

PC921
1571

PC922
1571

PC923
1571

PC924
1571

PC925
1571

PC926
1571

PC927
1571

PC928
1571

PC929
1571

PC930
1571

PC931
1571

PC932
1571

PC933
1571

PC934
1571

PC935
1571

PC936
1571

PC937
1571

PC938
1571

PC939
1571

PC940
1571

PC941
1571

PC942
1571

PC943
1571

PC944
1571

PC945
1571

PC946
1571

PC947
1571

PC948
1571

PC949
1571

PC950
1571

PC951
1571

PC952
1571

PC953
1571

PC954
1571

PC955
1571

PC956
1571

PC957
1571

PC958
1571

PC959
1571

PC960
1571

PC961
1571

PC962
1571

PC963
1571

PC964
1571

PC965
1571

PC966
1571

PC967
1571

PC968
1571

PC969
1571

PC970
1571

PC971
1571

PC972
1571

PC973
1571

PC974
1571

PC975
1571

PC976
1571

PC977
1571

PC978
1571

PC979
1571

PC980
1571

PC981
1571

AIP AMDT 9/25

Standard Instrument Departure Procedure Coding Tables

RNAV KAMIT 2E

Serial Number	Path Descriptor	Waypoint Identifier	Fly-over	Course/Track °M(°T)	Distance (NM)	Turn direction	Altitude (ft)	Speed (kt)	Coordinates	VPA/RDH	Navigation specification	Remarks
001	CA	-	-	066(058.5)	-	-	@1 000	-	-	-	RNAV 1	-
002	DF	PC811	-	-	-	L	-	-	33°42'12.1"N 126°42'48.8"E	-	RNAV 1	-
003	TF	OLLEH	-	013(005.0)	15.5	-	-10 000	-	33°57'42.2"N 126°44'26.5"E	-	RNAV 1	-
004	TF	KAMIT	-	013(005.0)	17.6	-	+FL 140	-	34°15'14.1"N 126°46'17.7"E	-	RNAV 1	-

RNAV AKPON 1E

Serial Number	Path Descriptor	Waypoint Identifier	Fly-over	Course/Track °M(°T)	Distance (NM)	Turn direction	Altitude (ft)	Speed (kt)	Coordinates	VPA/RDH	Navigation specification	Remarks
001	CF	PALRI	-	066(058.5)	14.3	-	-9 000 +6 000	-	33°38'27.2"N 126°44'37.4"E	-	RNAV 1	-
002	TF	AKPON	-	082(074.0)	30.6	-	-	-	33°46'49.6"N 127°19'53.0"E	-	RNAV 1	-

RNAV TAMNA 2E

Serial Number	Path Descriptor	Waypoint Identifier	Fly-over	Course/Track °M(°T)	Distance (NM)	Turn direction	Altitude (ft)	Speed (kt)	Coordinates	VPA/RDH	Navigation specification	Remarks
001	CF	PALRI	-	066(058.5)	14.3	-	-9 000 +6 000	-	33°38'27.2"N 126°44'37.4"E	-	RNAV 1	-
002	TF	TAMNA	-	117(108.9)	31.2	-	-	-	33°28'15.5"N 127°19'53.0"E	-	RNAV 1	-

RNAV PANSI 2E

Serial Number	Path Descriptor	Waypoint Identifier	Fly-over	Course/Track °M(°T)	Distance (NM)	Turn direction	Altitude (ft)	Speed (kt)	Coordinates	VPA/RDH	Navigation specification	Remarks
001	CF	PALRI	-	066(058.5)	14.3	-	-	-250	33°38'27.2"N 126°44'37.4"E	-	RNAV 1	-
002	TF	PC813	-	156(148.6)	10.0	-	@9 000	-250	33°29'55.5"N 126°50'50.0"E	-	RNAV 1	-
003	TF	CJU	-	246(238.7)	13.1	-	@9 000	-	33°23'04.6"N 126°37'26.8"E	-	RNAV 1	-
004	TF	PC814	-	231(222.8)	10.2	-	-10 000	-	33°15'36.4"N 126°29'13.5"E	-	RNAV 1	-
005	TF	PANSI	-	230(222.7)	20.8	-	-	-	33°00'14.4"N 126°12'25.1"E	-	RNAV 1	-

RNAV LIMDI 1E

Serial Number	Path Descriptor	Waypoint Identifier	Fly-over	Course/Track °M(°T)	Distance (NM)	Turn direction	Altitude (ft)	Speed (kt)	Coordinates	VPA/RDH	Navigation specification	Remarks
001	CF	PALRI	-	066(058.5)	14.3	-	-	-250	33°38'27.2"N 126°44'37.4"E	-	RNAV 1	-
002	TF	PC813	-	156(148.6)	10.0	-	@9 000	-250	33°29'55.5"N 126°50'50.0"E	-	RNAV 1	-
003	TF	CJU	-	246(238.7)	13.1	-	@9 000	-	33°23'04.6"N 126°37'26.8"E	-	RNAV 1	-
004	TF	PC816	-	292(284.5)	15.5	-	+FL 150	-	33°26'56.5"N 126°19'30.8"E	-	RNAV 1	-
005	TF	LIMDI	-	292(284.3)	25.6	-	-	-	33°33'13.3"N 125°49'53.0"E	-	RNAV 1	-

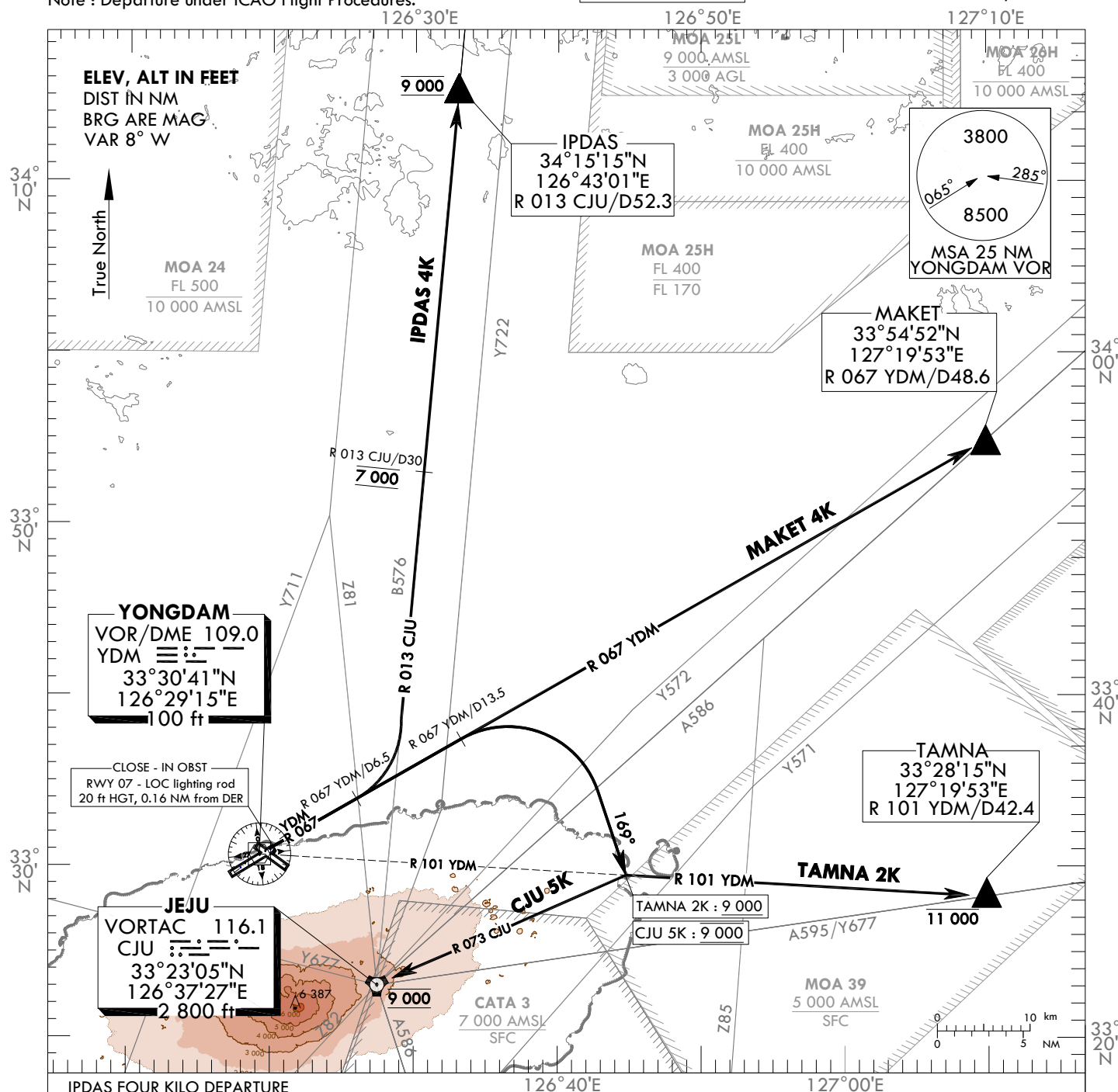
**STANDARD DEPARTURE CHART
INSTRUMENT(SID) - ICAO**

TRANSITION ALT 14 000
TRANSITION LVL FL 140

JEJU DEP 119.225
121.2
JEJU TWR 118.2
118.55

JEJU/Jeju Intl(RKPC)
RWY 07
IPDAS 4K, MAKET 4K
TAMNA 2K, CJU 5K

Note : Departure under ICAO Flight Procedures.



IPDAS FOUR KILO DEPARTURE

Climb on R 067 YDM until D6.5, then turn Left to intercept R 013 CJU then proceed direct to IPDAS.

* Minimum 4.9% CG is required for ATC purpose.

* Cross R 013 CJU/D30.0 at 7 000 ft and Cross IPDAS at 9 000 ft unless otherwise directed by ATC.

MAKET FOUR KILO DEPARTURE

Climb on R 067 YDM, then proceed direct to MAKET.

* Minimum 4.9% CG is required for ATC purpose.

TAMNA TWO KILO DEPARTURE

Climb on R 067 YDM until D13.5, then turn Right HDG 169° to intercept R 101 YDM then proceed direct to TAMNA.

* Minimum 5.4% CG is required for ATC purpose.

* Maintain at or above 9 000 ft before intercepting R 101 YDM and Cross TAMNA at or below 11 000 ft unless otherwise directed by ATC.

JEJU FIVE KILO DEPARTURE

Climb on R 067 YDM until D13.5, then turn Right HDG 169° to intercept R 073 CJU, then proceed direct to CJU.

* Minimum 5.4% CG is required for ATC purpose.

* Maintain at 9 000 ft before intercepting R 073 CJU and Cross JEJU VORTAC at 9 000 ft unless otherwise directed by ATC.

Change : Information of airspace restrictions(MOA 24, 25H) and ATS route(Y677).

INTENTIONALLY

LEFT

BLANK

STANDARD DEPARTURE CHART INSTRUMENT(SID) - ICAO

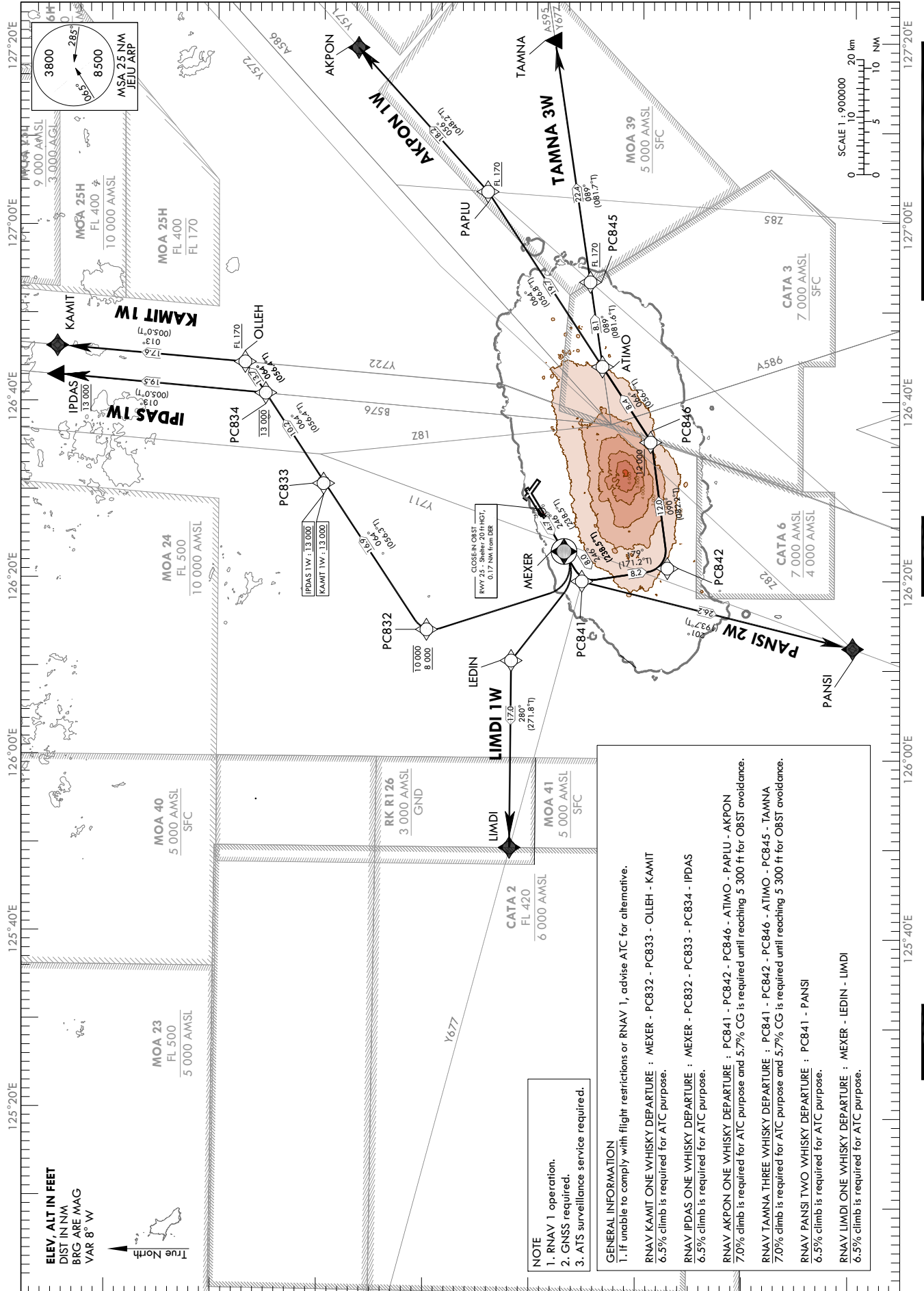
TRANSITION ALT 14 000
TRANSITION LVL FL 140

JEJU DEP 119.225
121.2
JEJU TWR 118.2
118.55

JEJU/Jeju Intl(RKPC)

RWY 25
RNAV KAMIT 1W, RNAV IPDAS 1W
RNAV AKPON 1W, RNAV TAMNA 3W
RNAV PANSI 2W, RNAV LIMDI 1W

Note : Departure under ICAO Flight Procedures.



Change : Information of airspace restrictions(MOA 23, 24, 25H).

JEJU/Jeju Intl(RKPC)

RWY 25

RNAV KAMIT 1W, RNAV IPDAS 1W

RNAV AKPON 1W

AERONAUTICAL DATA TABULATION

Standard Instrument Departure Procedure Coding Tables

RNAV KAMIT 1W

Serial Number	Path Descriptor	Waypoint Identifier	Fly-over	Course/Track °M(°T)	Distance (NM)	Turn direction	Altitude (ft)	Speed (kt)	Coordinates	VPA/RDH	Navigation specification	Remarks
001	CF	MEXER	Y	246(238.5)	4.7	-	-	-	33°27'28.0"N 126°23'12.0"E	-	RNAV 1	-
002	DF	PC832	-	-	-	R	-10 000 +8 000	-	33°40'46.0"N 126°13'51.9"E	-	RNAV 1	-
003	TF	PC833	-	064(056.3)	16.9	-	+13 000	-	33°50'08.8"N 126°30'44.8"E	-	RNAV 1	-
004	TF	OLLEH	-	064(056.4)	13.7	-	+FL 170	-	33°57'42.2"N 126°44'26.5"E	-	RNAV 1	-
005	TF	KAMIT	-	013(005.0)	17.6	-	-	-	34°15'14.1"N 126°46'17.7"E	-	RNAV 1	-

RNAV IPDAS 1W

Serial Number	Path Descriptor	Waypoint Identifier	Fly-over	Course/Track °M(°T)	Distance (NM)	Turn direction	Altitude (ft)	Speed (kt)	Coordinates	VPA/RDH	Navigation specification	Remarks
001	CF	MEXER	Y	246(238.5)	4.7	-	-	-	33°27'28.0"N 126°23'12.0"E	-	RNAV 1	-
002	DF	PC832	-	-	-	R	-10 000 +8 000	-	33°40'46.0"N 126°13'51.9"E	-	RNAV 1	-
003	TF	PC833	-	064(056.3)	16.9	-	@13 000	-	33°50'08.8"N 126°30'44.8"E	-	RNAV 1	-
004	TF	PC834	-	064(056.4)	10.2	-	@13 000	-	33°55'46.2"N 126°40'55.7"E	-	RNAV 1	-
005	TF	IPDAS	-	013(005.0)	19.5	-	@13 000	-	34°15'14.7"N 126°43'01.4"E	-	RNAV 1	-

RNAV AKPON 1W

Serial Number	Path Descriptor	Waypoint Identifier	Fly-over	Course/Track °M(°T)	Distance (NM)	Turn direction	Altitude (ft)	Speed (kt)	Coordinates	VPA/RDH	Navigation specification	Remarks
001	CF	PC841	-	246(238.5)	8.0	-	-	-	33°25'42.7"N 126°19'47.8"E	-	RNAV 1	-
002	TF	PC842	-	179(171.2)	8.2	-	-	-	33°17'38.3"N 126°21'17.3"E	-	RNAV 1	-
003	TF	PC846	-	090(082.2)	12.0	-	+12 000	-	33°19'15.6"N 126°35'28.6"E	-	RNAV 1	-
004	TF	ATIMO	-	064(056.7)	8.4	-	-	-	33°23'52.5"N 126°43'51.2"E	-	RNAV 1	-
005	TF	PAPLU	-	064(056.8)	19.7	-	+FL 170	-	33°34'41.3"N 127°03'36.5"E	-	RNAV 1	-
006	TF	AKPON	-	056(048.2)	18.2	-	-	-	33°46'49.6"N 127°19'53.0"E	-	RNAV 1	-

Change : Amended speed restriction for MEXER and PC832.

JEJU/Jeju Intl(RKPC)
RWY 25

RNAV TAMNA 3W

RNAV PANSI 2W, RNAV LIMDI 1W

AERONAUTICAL DATA TABULATION

Standard Instrument Departure Procedure Coding Tables

RNAV TAMNA 3W

Serial Number	Path Descriptor	Waypoint Identifier	Fly-over	Course/Track °M(°T)	Distance (NM)	Turn direction	Altitude (ft)	Speed (kt)	Coordinates	VPA/ RDH	Navigation specification	Remarks
001	CF	PC841	-	246(238.5)	8.0	-	-	-	33°25'42.7"N 126°19'47.8"E	-	RNAV 1	-
002	TF	PC842	-	179(171.2)	8.2	-	-	-	33°17'38.3"N 126°21'17.3"E	-	RNAV 1	-
003	TF	PC846	-	090(082.2)	12.0	-	+12 000	-	33°19'15.6"N 126°35'28.6"E	-	RNAV 1	-
004	TF	ATIMO	-	064(056.7)	8.4	-	-	-	33°23'52.5"N 126°43'51.2"E	-	RNAV 1	-
005	TF	PC845	-	089(081.6)	8.1	-	+FL 170	-	33°25'03.2"N 126°53'24.0"E	-	RNAV 1	-
006	TF	TAMNA	-	089(081.7)	22.4	-	-	-	33°28'15.5"N 127°19'53.0"E	-	RNAV 1	-

RNAV PANSI 2W

Serial Number	Path Descriptor	Waypoint Identifier	Fly-over	Course/Track °M(°T)	Distance (NM)	Turn direction	Altitude (ft)	Speed (kt)	Coordinates	VPA/ RDH	Navigation specification	Remarks
001	CF	PC841	-	246(238.5)	8.0	-	-	-	33°25'42.7"N 126°19'47.8"E	-	RNAV 1	-
002	TF	PANSI	-	201(193.7)	26.2	-	-	-	33°00'14.4"N 126°12'25.1"E	-	RNAV 1	-

RNAV LIMDI 1W

Serial Number	Path Descriptor	Waypoint Identifier	Fly-over	Course/Track °M(°T)	Distance (NM)	Turn direction	Altitude (ft)	Speed (kt)	Coordinates	VPA/ RDH	Navigation specification	Remarks
001	CF	MEXER	Y	246(238.5)	4.7	-	-	-	33°27'28.0"N 126°23'12.0"E	-	RNAV 1	-
002	DF	LEDIN	-	-	-	R	-	-	33°32'42.1"N 126°10'14.9"E	-	RNAV 1	-
003	TF	LIMDI	-	280(271.8)	17.0	-	-	-	33°33'13.3"N 125°49'53.0"E	-	RNAV 1	-

Change : Information of course/track.

INTENTIONALLY

LEFT

BLANK

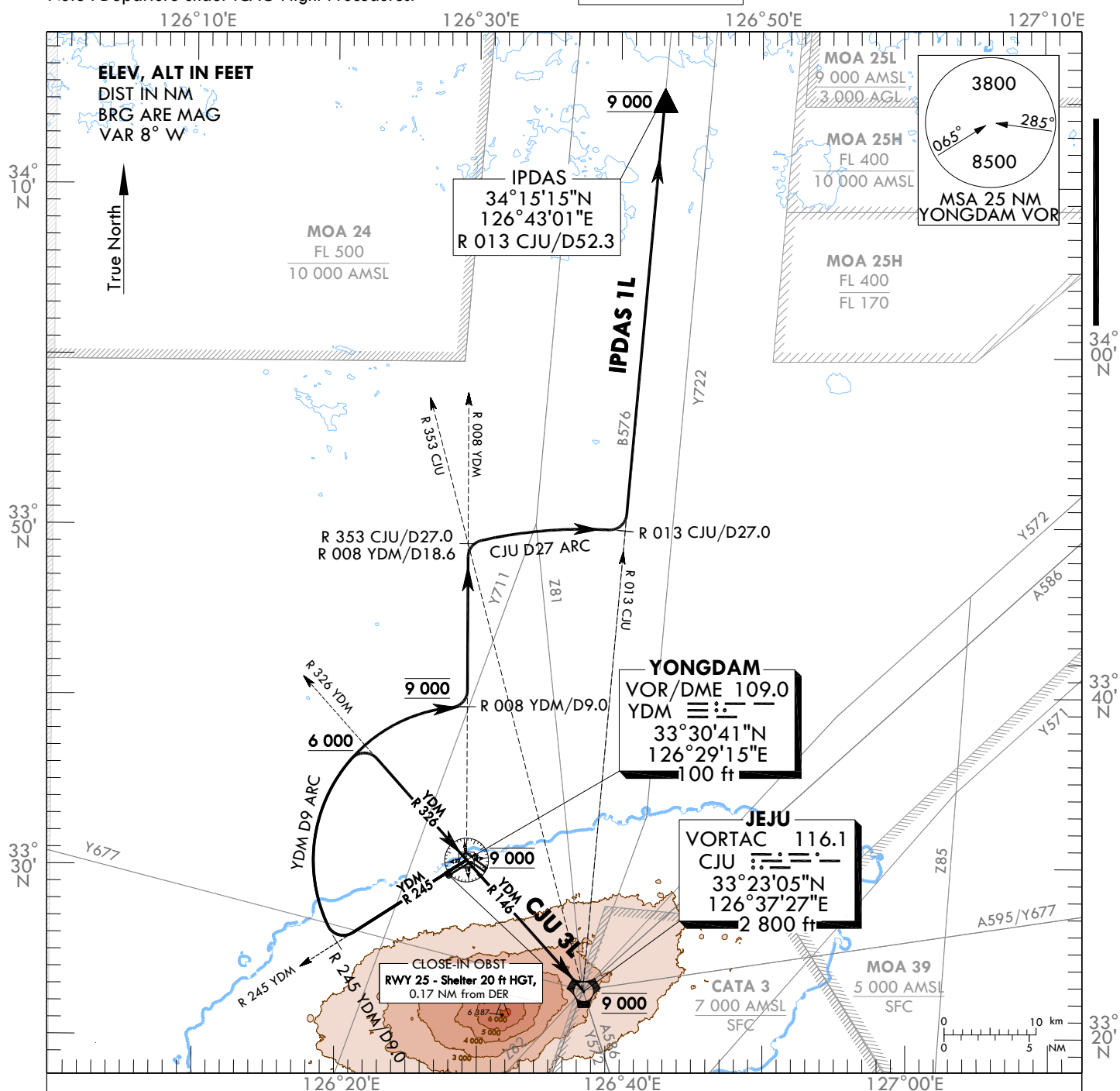
STANDARD DEPARTURE CHART
INSTRUMENT(SID) - ICAO

TRANSITION ALT 14 000
TRANSITION LVL FL 140

JEJU DEP 119.225
121.2
JEJU TWR 118.2
118.55

JEJU/Jeju Intl(RKPC)
RWY 25
CJU 3L, IPDAS 1L

Note : Departure under ICAO Flight Procedures.



Change : Information of airspace restrictions(MOA 24, 25H).

INTENTIONALLY

LEFT

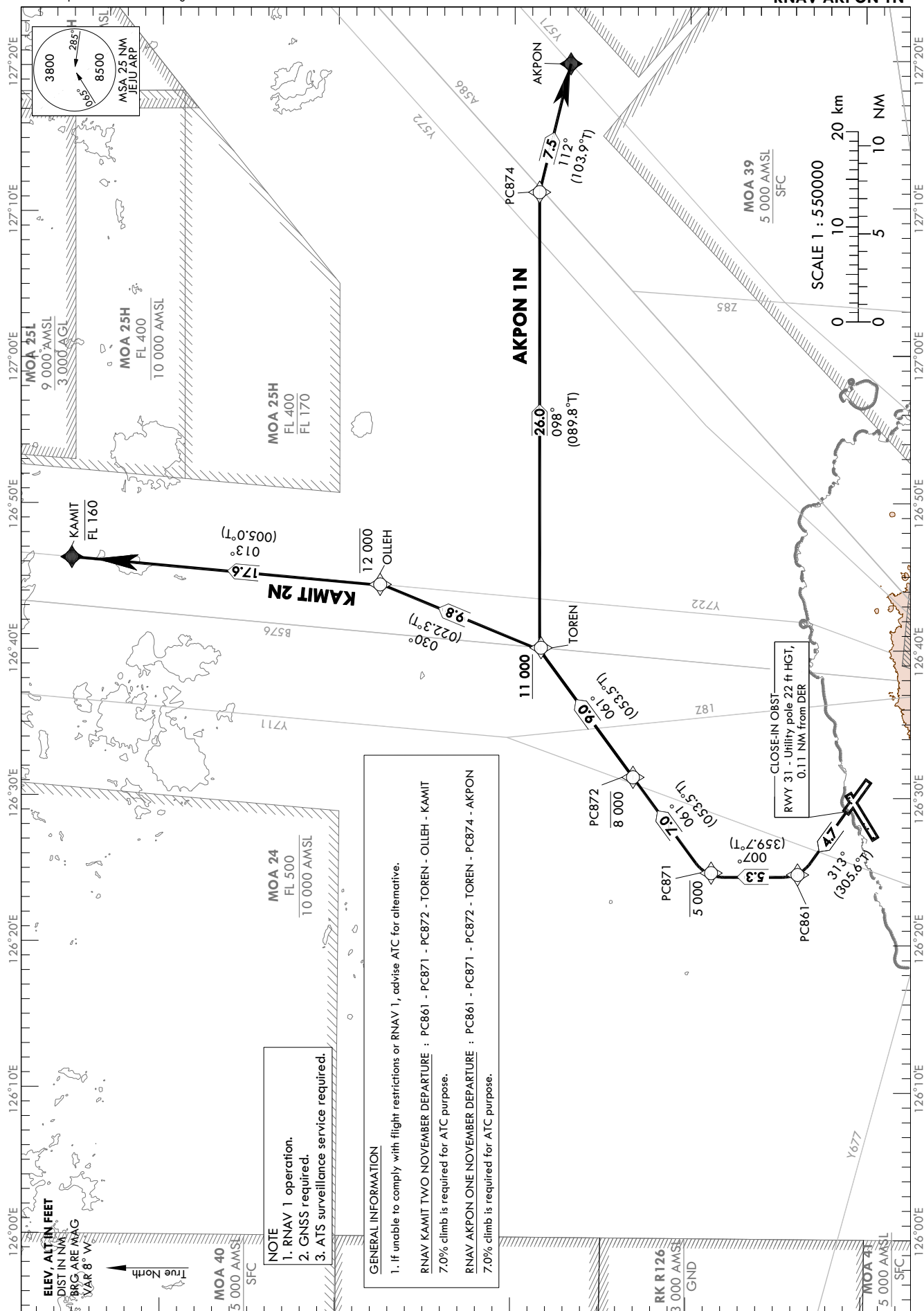
BLANK

TRANSITION ALT 14 000
TRANSITION LVL FL 140

JEJU DEP	119.225
	121.2
JEJU TWR	118.2
	118.55

**JEJU/Jeju Intl(RKPC)
RWY 31
RNAV KAMIT 2N
RNAV AKPON 1N**

Note : Departure under ICAO Flight Procedures.



Change : Information of airspace restrictions(MOA 24, 25H).

AERONAUTICAL DATA TABULATION

Standard Instrument Departure Procedure Coding Tables

RNAV KAMIT 2N

Serial Number	Path Descriptor	Waypoint Identifier	Fly-over	Course/Track °M(°T)	Distance (NM)	Turn direction	Altitude (ft)	Speed (kt)	Coordinates	VPA/ RDH	Navigation specification	Remarks
001	CF	PC861	-	313(305.6)	4.7	-	-	-	33°33'43.8"N 126°24'34.1"E	-	RNAV 1	-
002	TF	PC871	-	007(359.7)	5.3	-	-5 000	-	33°39'05.3"N 126°24'32.0"E	-	RNAV 1	-
003	TF	PC872	-	061(053.5)	7.0	-	-8 000	-	33°43'16.9"N 126°31'18.7"E	-	RNAV 1	-
004	TF	TOREN	-	061(053.5)	9.0	-	+11 000	-	33°48'36.8"N 126°39'57.7"E	-	RNAV 1	-
005	TF	OLLEH	-	030(022.3)	9.8	-	-12 000	-	33°57'42.2"N 126°44'26.5"E	-	RNAV 1	-
006	TF	KAMIT	-	013(005.0)	17.6	-	-FL 160	-	34°15'14.1"N 126°46'17.7"E	-	RNAV 1	-

RNAV AKPON 1N

Serial Number	Path Descriptor	Waypoint Identifier	Fly-over	Course/Track °M(°T)	Distance (NM)	Turn direction	Altitude (ft)	Speed (kt)	Coordinates	VPA/ RDH	Navigation specification	Remarks
001	CF	PC861	-	313(305.6)	4.7	-	-	-	33°33'43.8"N 126°24'34.1"E	-	RNAV 1	-
002	TF	PC871	-	007(359.7)	5.3	-	-5 000	-	33°39'05.3"N 126°24'32.0"E	-	RNAV 1	-
003	TF	PC872	-	061(053.5)	7.0	-	-8 000	-	33°43'16.9"N 126°31'18.7"E	-	RNAV 1	-
004	TF	TOREN	-	061(053.5)	9.0	-	+11 000	-	33°48'36.8"N 126°39'57.7"E	-	RNAV 1	-
005	TF	PC874	-	098(089.8)	26.0	-	-	-	33°48'38.0"N 127°11'08.8"E	-	RNAV 1	-
006	TF	AKPON	-	112(103.9)	7.5	-	-	-	33°46'49.6"N 127°19'53.0"E	-	RNAV 1	-

**STANDARD DEPARTURE CHART
INSTRUMENT(SID) - ICAO**

TRANSITION ALT 14 000
TRANSITION LVL FL 140

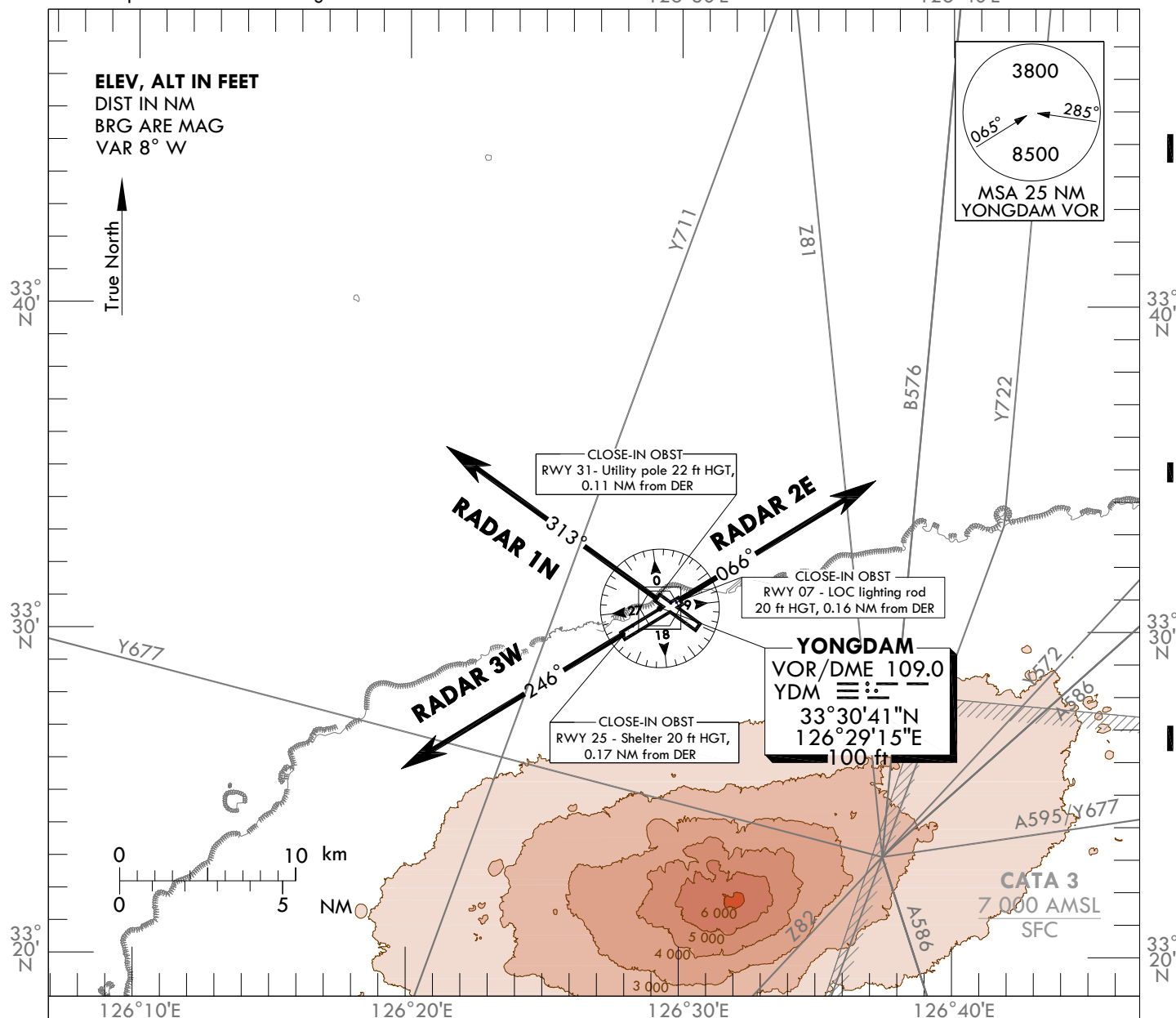
JEJU DEP 119.225
121.2
JEJU TWR 118.2
118.55

JEJU/Jeju Intl(RKPC)
RWY 07 RADAR 2E
RWY 25 RADAR 3W
RWY 31 RADAR 1N

Note : Departure under ICAO Flight Procedures.

126°30'E

126°40'E



RADAR TWO ECHO DEPARTURE

TAKE OFF RWY 07 : Climb on RWY HDG until reaching 2 200 ft for RADAR VECTOR.

* Minimum 4.5% CG is required until 2 200 ft for ATC purpose.

RADAR THREE WHISKEY DEPARTURE

TAKE OFF RWY 25 : Climb on RWY HDG until reaching 3 000 ft for RADAR VECTOR.

* Minimum 3.7% CG is required until 1 400 ft for OBST avoidance.

RADAR ONE NOVEMBER DEPARTURE

TAKE OFF RWY 31 : Climb on RWY HDG until reaching 2 200 ft for RADAR VECTOR.

* Minimum 4.5% CG is required until 2 200 ft for ATC purpose.

NOTE : These procedures are available only for aircraft that don't satisfy RNAV 1 navigation specification.

Change : Information of MAG VAR(7° W → 8° W) and OBST.

INTENTIONALLY

LEFT

BLANK